



**Rex Gooding**

**The White Bungalow, Village Street, Edwalton,**

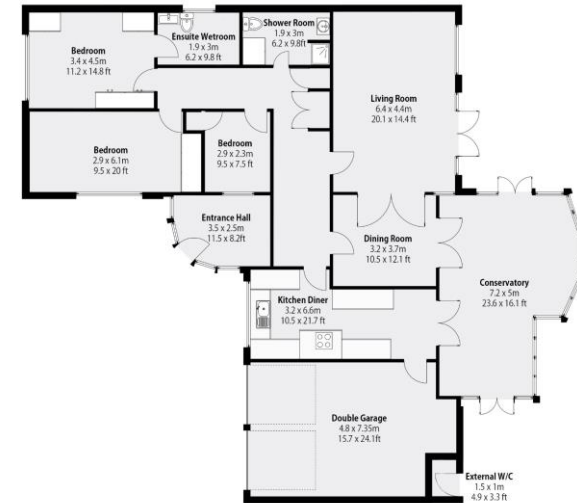
**Guide Price: £625,000**

## The White Bungalow, Village Street, Edwalton, NG12 4AB

The White Bungalow offers a rather special location in the heart of Edwalton village backing onto Miss Machin's field and enjoying a lovely established rear garden and lovely mature backdrop. Tucked away at the end of a quiet cul-de-sac off Village Street the property is deceptively spacious and very well maintained. An impressive sized entrance hall leads to a large living room (20ft x 14ft) with French doors onto the garden. Dining room with French doors onto a large conservatory that enjoys those lovely views of the rear garden and the paddock behind. Breakfast kitchen with integral door access to the double garage. The principle bedroom has an en-suite wetroom and there are two further bedrooms and a shower room. There is a generous amount of driveway parking and a double garage. The property is ideal for those looking to downsize without wanting to compromise well-proportioned accommodation. Gas central heating and double glazing.

### Accommodation & Amenities

- Lovely Mature Plot & Special Location Backing onto Miss Machin's Field
- Quiet Cul-De-Sac Location off Village Street in the Heart of Edwalton Village
- Spacious & Well Proportioned Accommodation
- Large Living Room, Dining Room, Breakfast Kitchen & Conservatory
- Principal Bedroom with En-suite, Two Further Bedrooms & Shower Room
- Double Garage & Generous Driveway Parking
- Gas Central Heating & Double Glazing



Total Combined Area: 209.7m<sup>2</sup> | 2257.5sq Ft.  
Whilst every attempt has been made to ensure the accuracy of the floorplan, measurements of doors, windows, rooms and any other items are approximate and no responsibility is taken for any error, omission or mis-statement. This plan is for illustrative purposes only and should be used as such by any prospective purchaser.



